



- ① res-bona® BPS 1
- ② res-bona® BPS 2

High-performance protection with a product guarantee of at least 10 years

Prevents ...

- Damage caused by acid rain
- Alkali problems in concrete
- The intrusion of salt/water, moisture, chlorides,
- Cracking, damage caused by frost, armour rust and carbonation

Open for diffusion (breathable), sealing, stabilising, environmentally friendly, durable, economical and improves the outcome of the paint



① res-bona® BPS 1

...is an up to 20 cm deep penetrating, permanent compaction and seal for all porous, cement and mineral construction materials for indoor & outdoor use. Problems with moisture and water penetration of any kind are solved. It condenses and solidifies by crystallisation, but still remains open to diffusion (breathable).

Thus the penetration of water, acid rain, salt, etc. is stopped and as such prevents armour rust, salt damage, cracking, flaking and the growth of moss, fungus, algae and mould. A dense, solid, protected, dust-free and water-resistant materia is achieved. Res-bona® BPS 1 is colourless, odourless, solvent free, non-flammable, non toxic, biodegradable and approved for drinking water areas.

It leaves no film layer, but a clear and natural surface. In the commercial sector res-bona® BPS-1 is most commonly used to clean damp basements and walls.

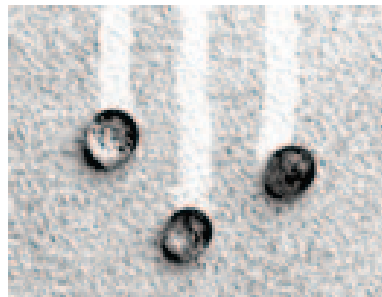
Enjoy a pleasant room temperature and save up to 30% of heating and energy costs.

- Basement wall/floor, cleansing and protection of humidity in old/new buildings
- External stairs made from any untreated stone and concrete
- Terrace floors (concrete, brick or stone)
- Balconies, foundations, attics (prevents cracking and reduces drying time)
- Baths, showers, wet-rooms (cheap & effective sealing)
- Garage floors (which are to be glossed, painted or tiled)
- Concrete chimneys
- Swimming pools made of concrete (which are to be glossed, painted or tiled)
- Concrete tubs (for basement or underground garage waterproofing)
- Flat roof (for cleaning or redevelopment use res-bona® BPS 2 after)
- Masonry (horizontal barrier, removal of moisture & mould)

🌀 res-bona® BPS 2

...is an up to 6 cm deep penetrating, permanent impregnation and seal for all porous, cement and mineral surfaces for indoor & outdoor use. It forms a highly water and dirt repellent surface that is very easy to clean and prevents the growth of moss, fungus or algae. It protects the material against salt damage, air pollution and UV rays. Furthermore, it provides a transparent protection (including graffiti protection) on all types of walls/concrete surfaces and preserves the natural appearance. res-bona® BPS 2 is colourless, odourless, solvent free, non-flammable, non-toxic and biodegradable. It leaves no film layer, but a clear and natural surface.

It is most commonly used for the natural impregnation of stone facades, stone surfaces (e.g. kitchen worktops), roof tiles and stone/concrete walls. It leaves a natural surface and repels water, any kind of liquid (oil, grease, red wine, coffee, etc.), colour and environmental influences. Old (untreated) stones and bricks will be permanently protected.



It also reduced heating and energy costs by up to 50% through the "drying up" of the stone surfaces.

- Brick facades (sealing, stone cleanser, energy cost reduction, joint sealing) - e.g. with monument restoration
- Unsealed stone floors (limestone, sandstone, granite, slate, terracotta, basalt, etc.)
- Kitchen countertop, bath area, stone window sill
- Unglazed tiles (terracotta, granite, slate, etc.)
- External walls and stone walls with a natural look (in addition to complete graffiti protection)
- Mineral plaster (with no chemical or water-repellent substances)
- Garage floors with a concrete appearance (against oil stains, etc.)
- Roof tiles (unglazed made from clay or concrete) - to be sealed and insulated
- Pool with exposed concrete (pre-treat with res-bona® BPS 1)
- Sealing of joints in showers, bathrooms, swimming pools
- Chimney (made from brick or other types of stone with a natural look)
- Attic floors (e.g. as industrial floors, etc.)
- Flat roofs (pre-treat with res-bona® BPS 1)
- Eternit panels (house cladding or corrugated eternit panels for the roof)
- Fountain and garden units made of concrete and stone
- Terracotta/flower pots (to keep their natural appearance and make them frost resistant)

